

# End-to-End

## The Parish Magazine of Rivenhall and Silver End



How Wonderful it was to hold our Burns Supper again  
The Pipers ranging in age from 14 to nearly 70 performed  
admirably.

The Evening raised over £800 for Church Funds.

March

2022

50p

## **The Following are our services For March 2022**

### **6<sup>th</sup> March**

9.30 am St Francis

11 am St Mary's

### **13<sup>th</sup> March**

9.30 am Silver End

11.15 am St Mary's

### **20<sup>th</sup> March**

9.30 am St. Francis

11 am St Mary's

### **27<sup>th</sup> March**

9.30 am St Francis

11.am St Mary's

### **1<sup>st</sup> Sunday of Lent**

Holy Communion

All Age Worship

### **2<sup>nd</sup> Sunday of Lent**

Morning Prayer

Holy Communion

### **3<sup>rd</sup> Sunday of Lent**

Holy Communion

Matins

### **4<sup>th</sup> Sunday of Lent**

Morning Prayer

Holy Communion

## **Church Contacts**

All Contact should be Via the Churchwardens

Churchwarden Ann Clarke

01376 514825

Churchwarden Peter Hope

01376 502605

Email [phope02@gmail.com](mailto:phope02@gmail.com)

Rivenhall Contact Carole McCarthy

01376 512781

Silver End Contact Ruth Aitken

01376 583846

Rivenhall Website

[www.stmarysrivenhall.co.uk](http://www.stmarysrivenhall.co.uk)

St Francis Silver End Website

[www.st-francis.org.uk/](http://www.st-francis.org.uk/)

Contact the Editor 07904 235101 or [phope02@gmail.com](mailto:phope02@gmail.com)

## **Breaking News “Man from Galilee Walks on Water”**

If we were to read this headline in the news today, we would be extremely sceptical, fake news and even fake pictures are everywhere. I will give you a clear example using the picture reproduced below which was taken by a Daily Mail photographer. Back in April 2019 a reporter on The Mail was preparing an article about radiotherapy, as part of a campaign to widen the availability of radiotherapy treatments for cancer across the country.

The doctor at University College Hospital in London suggested that my wife Clare would be a good example of the use of radiotherapy for cancer treatments and Clare agreed that her story could to be used by the journalist for this article.

As a result, “The Daily Mail” sent a photographer to take pictures of Clare for the article. In addition, as we had the whole family including our twin granddaughters here in the UK for a holiday, we got him to take a number of group photographs as below. Eventually the photographer e-mailed the pictures to me and we were very pleased to have them except not one of them was quite what I wanted.

After giving it, some thought I decided to try and improve the picture, resulting in the one shown below. To achieve this, I used computer software to take parts of two of the pictures. I cut them in half and then stitched them back together between Clare and Sarah in the middle. The picture was then just what I had hoped for and takes pride of place on the mantelpiece at home. This is the only picture we have of the whole family including the twins, so we are truly grateful for having received these pictures.

This demonstrates how we should always be sceptical about the evidence we see in a story or a picture as there are many ways to distort the truth.



One such very public example where doubt has been cast on a picture is the one of Prince Andrew with a girl in London. This picture has appeared constantly in the news media. It was claimed by Prince Andrew's lawyers that the picture is fake. This is based on the knowledge that an original of this picture is not available (lost, missing or doesn't exist?). Now whether you believe the picture is real or fake? I can tell you that it would not be difficult to create that picture from a number of other pictures using computer software. The point is that millions if not hundreds of millions of people believe what they see in that Photo and yet nobody has admitted taking it and nobody has the original!

The New Testament Bible story of Jesus walking on water is one of the most widely told narratives and key miracles of Jesus's ministry. The episode occurs shortly after another miracle, the [feeding of the 5,000](#). This event convinced the 12 disciples that Jesus is indeed the living [Son of God](#). Thus, the story is extremely significant to Christians and the basis for several important life lessons that govern how believers practice their faith.

#### Key Verses

Mark 6:50–51- They were all terrified when they saw him. But Jesus spoke to them at once. "Don't be afraid," he said. "Take courage! I am here!" Then he climbed into the boat, and the wind

stopped. They were totally amazed.

Matthew 14:29-31- "Yes, come," Jesus said. So, Peter went over the side of the boat and walked on the water toward Jesus. But when he saw the strong wind and the waves, he was terrified and began to sink. "Save me, Lord!" he shouted. Jesus immediately reached out and grabbed him. "You have so little faith," Jesus said. "Why did you doubt me?"

#### Scripture References

In the [Gospels](#), Jesus walks on water in Matthew 14:22-33 and also in Mark 6:45-52 and John 6:16-21. In Mark and John, however, the reference to the [apostle Peter](#) walking on water is not included.

So why does this matter? well the Bible tells this story from the point of view of a number of eye witnesses, recorded in a number of different books, by different people and possibly at different times as detailed above. The evidence that these events took place is much more solid than the fake news, fake propaganda and fake pictures we are frequently asked to believe are true.

We should always treat any story with a degree of scepticism but in the case of the miracles of Jesus we should have much greater faith in the accuracy of what is described in the bible.

Jesus through his teachings and his miracles provides a far more compelling blueprint for how we should live our lives, than that which is offered by our leaders, the newspapers and the broadcasters of today.

Peter Hope Editor and Church Warden

\*\*\*\*\*

### **Readings and Collects for March 2022**

#### **6<sup>th</sup> March 1<sup>st</sup> Sunday of Lent**

##### **Readings**

Deuteronomy 26:1-11

Romans 10:8b-13

Luke 4:1-13

##### **Collect**

Heavenly Father,  
your Son battled with the powers of darkness,  
and grew closer to you in the desert:  
help us to use these days to grow in wisdom and prayer  
that we may witness to your saving love  
in Jesus Christ our Lord..

### **13<sup>th</sup> March 2<sup>nd</sup> Sunday of Lent**

#### **Readings**

Genesis 15:1-12, 17-18

Philippians 3:17-4:1

Luke 13:31-35

#### **Collect.**

Almighty God,  
by the prayer and discipline of Lent  
may we enter into the mystery of Christ's sufferings,  
and by following in his Way  
come to share in his glory;  
through Jesus Christ our Lord..

### **20<sup>th</sup> March 3<sup>rd</sup> Sunday of Lent**

#### **Readings**

Isaiah 55:1-9

1 Corinthians 10:1-13

Luke 13:1-9

#### **Collect**

Eternal God,  
give us insight  
to discern your will for us,  
to give up what harms us,  
and to seek the perfection we are promised  
in Jesus Christ our Lord.

### **27<sup>th</sup> March 4<sup>th</sup> Sunday of Lent**

#### **Readings**

Exodus 2:1-10

Colossians 3:12-17

Luke 2:33-35

#### **Collect**

Merciful Lord,  
you know our struggle to serve you:  
when sin spoils our lives  
and overshadows our hearts,  
come to our aid  
and turn us back to you again;  
through Jesus Christ our Lord.

\*\*\*\*\*

**The 50/50 Club February 2022 winners**  
**1st Mr T Ladkin 2nd Mr A Moss 3rd Mrs C Vandyke**

\*\*\*\*\*

**RIVENHALL PARISH COUNCIL**

**NOTES OF THE COUNCIL MEETING HELD ON 1<sup>ST</sup>  
FEBRUARY 2022**

These notes are an abridged version of the minutes.

**Present:** Cllrs. Abbott (Chairman), Wright (Vice-Chairman), A'Lee, Cairns, Elliott, Prime and Turner.

**Also present:** Parish Clerk, ECC Cllr. Playle and 1 member of the public.

**Chairman's Report**

The Chairman welcomed everyone to the February meeting. He referred to the 2 important major planning applications to be considered at the meeting and confirmed that, as with previous major applications, he would leave the meeting for the duration of their consideration as the applications would be decided by the BDC Planning Committee at a later date, of which he is a member.

The Chairman referred to the recent further cases of waste dumping and the ongoing littering in the parish, problems which the parish council in working with BDC, remained determined to reduce. Waste left at the recycling area recently was of a disgusting nature and he thanked BDC for attending to clean up the mess as best they could. He also thanked BDC for their swift response in clearing up the area around the lay-by along the A12 underpass on Henry Dixon Road. He also again thanked the parish litter picker and all those who volunteer to litter-pick locally. Enhanced measures for detecting fly-tipping and littering at known 'hot-spots' are being progressed with BDC.

## Public Forum

The following matters were raised:

ECC Cllr. Playle gave information regarding the following:

- Winter road gritting; revised bus schedules; Oak Road flooding and the damaged bollard in Rivenhall End and that the ECC 2022/23 Precept would rise by 4.4%.

Questions were raised with the ECC Councillor about recent heavy tree cutting in Tarecroft Wood which had been carried out by ECC.

## Matters for Discussion

### Annual Report & Annual Parish Assembly compilation

The draft Annual Report should be approved at the April meeting, ready for printing then distribution prior to the APA in May. The APA is scheduled for Tuesday 10<sup>th</sup> May 2022 commencing at 6.45pm in Rivenhall Village Hall.

### RPFA representative

It was **unanimously agreed** that Cllr. Wright become the RPC representative.

### Tree & Bulb planting

The BDC Planting Licence has been agreed and signed ready for return to BDC.

An initial quotation had been received for the fencing and gate. BDC has been approached to provide a second quote for this work.

Planting is to be undertaken during early spring.

### Tree felling in Tarecroft Wood

The Chairman had obtained a number of ECC documents relating to the heavy tree cutting carried out recently. It appears that the main financial driver was sale of firewood on a cost per tonne basis. Apparently the felled timber and brush which covers most of the woodland floor will be left there until summer. The oldest tree that had been felled was



approx. 120 years old. Many larger trees had been clear felled and it remains to be seen as to whether they will regenerate as coppice.

Representatives from RPC had met ECC on site several times regarding management of this ancient wood requesting sensitive management, but what ECC is doing is coming into the wood using private contractors about once a decade to heavily cut whole compartments with little or no regular management on a year-by-year basis in-between.

With major gaps created in the woodland canopy there is now more risk of wind damage to remaining mature trees.

It **was agreed**, by a majority vote with one abstention that the Clerk would write to ECC and The Forestry Commission pointing out the wanton desecration of this ancient woodland.

#### New pole for CCTV cameras at the recycling site on Oak Road

An initial quote had been received for a pole. BDC has been approached to provide a second quote for this work.

It **was agreed** that if the BDC quote was within £100 of the previous one then the Clerk together with the Chairman should decide the course of action.

The Clerk is to approach the farmer as to whether or not the pole could be put up just off the verge on his land.

#### Queen's Platinum Jubilee Celebrations

It **was agreed** to progress the planting of a Jubilee Oak, with a search for a suitable site to be completed soon.

#### Highways

The Chairman continues to be in contact with National Highways regarding the A12 lighting defects, potholes and the cycleway.

All ECC Highways issues have been reported by the Chairman.

The Chairman will conduct another inspection of all streetlights within the Parish and report malfunctions to ECC Highways.

## General Maintenance

The Chairman will check the steps and slopes from Henry Dixon Road up to the A12 and speak to the maintenance contractor at their next meeting.

## **Planning Applications**

**20/02060/OUT:** Additional information re the Bellway proposed development of 230 houses on land off Rectory Lane Rivenhall (on proposed cycle ways in Witham).

There was **unanimous agreement** that this application should be rejected as being totally inappropriate and impractical and it was **agreed** that Cllr. A'Lee, given her professional expertise in highway/traffic management matters prepare a suitable reply to BDC, both reiterating previous objections by RPC and expressing RPC's current objections to the cycleway proposals [**Post meeting note: The Bellway application for up to 230 houses was refused planning permission by BDC Planning Committee on 22<sup>nd</sup> February.**]

**21/03735/FUL:** Solar Farm – land off Church Road and Park Road.

It was **agreed by a vote of 5 to 1** to object to this application and recommend refusal for the following reasons:

The site will be visible from Church Road despite hedge planting which will not mature for many years.

Grade one agricultural land will be removed from food production.

Glare from solar panels could impact on the visibility for motorists along Church Road and Park Road.

Local wildlife, present at the moment, will be denied access to the site; the species affected could include deer, badgers, hares; birds including skylarks, kestrels and other birds of prey, and many insects such as bees and butterflies.

This site would seriously add to the overdevelopment of the local countryside, which currently and proposed includes various housing developments, quarries, the waste site and

various major highway schemes.

Rivenhall is declining from being a rural idyll with so many construction sites.

### **Planning results:**

**21/00031/OUT:** Commercial units on land at Burghey Brook Farm, London Road – Outline Permission granted by BDC.

**21/03409/REM:** Reserved matters re 3 dwellings on land adjacent to Rectory Lane – application withdrawn.

**21/03473/FUL:** Retention of site offices etc by Bellway on land southeast of Rectory Lane - Permission granted by BDC for 6 months, expires 14<sup>th</sup> July 2022.

### **Ongoing Major Issues:**

#### BDC Local Plan

BDC is still awaiting the Inspector's report.

#### Rivenhall Airfield Major Waste Site

The Chairman and Vice-Chairman are scheduled to attend a site meeting on 2<sup>nd</sup> February 2022 to discuss the tree works proposed by Indaver.

#### Colemans Quarry

Cllr. Wright gave a brief, less than encouraging, report from the last liaison meeting in that further expansion of activities is anticipated.

### **Information exchange and items for the March agenda**

Matters relating to PRoW48 to be discussed at the March meeting.

BDC has attended to the rose beds on the Village Green.

### **Dates of future meetings**

1<sup>st</sup> March at Henry Dixon Hall and 5<sup>th</sup> April at Rivenhall Village Hall, both starting at 7.30 hours.

## Sky Notes March 2022

There are several ways of considering when Spring officially begins. It can be taken as when the weather feels Spring-like and that can vary a lot from year to year. Meteorological Spring (ie for weather recording purposes) starts on 1st March. An alternative start to Spring is when the clocks go forward by 1 hour to British Summer Time – which this year takes place on Sunday, 27th March at 1am.

For astronomers, Spring starts at the Vernal Equinox which this year is on 20th March in the afternoon. On this date daylight and night hours are broadly equal everywhere on Earth and following the Equinox in the Northern Hemisphere daylight hours exceed the hours of night.

There are no bright planets in the evening sky this month and in fact all of them are clustered near the Sun in the early morning sky, although it will only be Venus that is readily visible, low down in pre-dawn twilight in the South Eastern sky.

In early Spring the young Moon is very well placed in the Western evening sky when Earthshine can be seen (see picture). This March the best period to look for Earthshine will be from the 4th to the 8th. Earthshine is seen when the portion of the Moon's surface not lit by the Sun is more faintly lit by light from the Earth.

Full Moon is on the night of the 18th March and will be noticeably lower in the sky than the high winter Moons we have just had.

By late March the Spring constellations are well on show looking towards the East during the late evenings. Ursa Major, the Great Bear, is very high in the East with its tail pointing downwards towards the horizon. Following the slight curve of the tail downwards leads the observer to the star Arcturus, the 4th brightest star in the entire night sky. To the left of Arcturus a part-circle of stars can be seen. This is the small constellation of Corona Borealis, the Northern Crown. It is one of the 48 constellations listed by the 2nd-century astronomer Ptolemy. Due to its distinctive shape it has been given many other associations by ancient cultures including the Cheyenne in North America who called the constellation the Camp Circle because its shape was similar to the way they arranged their camps, in a semi-circle.

The James Webb Space Telescope is now undergoing testing before observations can begin. So far all appears to be going well with this new space telescope which represents a great leap in astronomical

technology, designed to replace, and go far beyond the capabilities, of the legendary Hubble Space Telescope.

## **Sky Watcher**

\*\*\*\*\*

### **End to End Nature Care.**

With the country gradually settling into some sort of post-pandemic normality, it was encouraging to have quite a crowd attend the recent talk by Ros Mercer on the subject of "Flint". As Ros pointed out, while humans have relied on metal-based technology for the last 5,000 years, for many, many thousands of years previously it was flint which was the mainstay of human existence. Plus, in our part of the country it forms by far and away the most abundant hard material for use in building and small, eroded pieces of it are the main ingredients of the gravels quarried locally.

But what actually is it and where does it come from? Chemically it is just silica (silicon dioxide,  $\text{SiO}_2$ ) and behaves much like glass, demonstrating conchoidal fracture (showing concentric, rounded lines) when broken. In mineral terms it is a very fine mosaic of colloidal silica (opal) and cryptocrystalline silica (chalcedony) but its structure is only visible under an electron microscope. Geologically speaking it is a form of chert unique to the chalk deposits which were laid down in an extensive shallow sea in the late Cretaceous period between 100-65 million years ago (the latter part of the era of the dinosaurs). This period in the Earth's history is unique in that global temperatures were high, hence there were no ice-caps and the sea level was very high. Planktonic algae known as coccolithophores had evolved and were flourishing in the conditions; these algae produce tiny plates of calcium carbonate which accumulated in astronomical numbers on the seabed to create the enormous deposits of chalk, huge in terms of geographical expanse and thickness..

As well as the coccolithophores the chalk sea supported a wealth of other organisms, as is evidenced by the abundance of fossils often found within the chalk (and in flint too). Amongst these were sponges, diatoms and radiolaria which produced silica-based skeletons. As they died and sank to the bottom, the slightly alkaline seabed conditions slowly dissolved the silica. About 5 metres deep in the seabed sediment, however, a lack of diffused oxygen allowed anaerobic bacteria to thrive, generating gaseous hydrogen sulphide as a waste product. As this bubbled up into the aerobic layer it

formed weak sulphuric acid which partially dissolved the limy mud and allowed silica to crystallise. Again, over time (something geology has lots of) this formed horizons of silica gel which crystallised into the great layers of flint seen in chalk cliffs today, usually in nodules moulded within the old burrows of infaunal organisms such as worms and some urchins and crustaceans, though sometimes in large tabular masses.

Ros (assisted by her husband Ian and an impressive display of specimens) went on to describe the various structures and fossils found in flint and the uses it has been applied to over time, from stone-age bladed tools to striking sparks to make fire (and in flintlock firearms), building material, aggregate and even the grinding media in ball mills.

Incidentally, Ros and Ian have prepared a greatly revised and expanded edition of the book "Essex Rock", originally written by another great Essex geologist, Gerald Lucy, and published in 1999. The new book should be available from April and will be of great value to anybody with even the slightest interest in the local landscape and its underlying geology.

Our next meeting is on **Wednesday 16<sup>th</sup> March 2022 at 8pm at Silver End Congregational Church on Silver Street** (postcode CM8 3QF) when I will be giving a presentation on pre-covid travels in "**Costa Rica**" and the various wildlife encountered there. All are welcome. There is a small fee of £2 per head to cover costs but that includes refreshments during the interval.

Then, in April, we commence outdoor activities with the **Cowslip Count** on **Wednesday 20<sup>th</sup> April 2022**, although if we have a cold spring we may put it back a week to catch the optimum blooming period. Further details will be in next month's magazine but the up to date news is always listed on our website [www.e2e.silverend.org](http://www.e2e.silverend.org) and in our Facebook group, where any recent wildlife sighting or news is always welcome to be posted. Don't be shy. Alternatively if anybody has any questions about the group then I can always be contacted on [simon@e2e.silverend.org](mailto:simon@e2e.silverend.org) or 07947 388180.

**Simon Taylor**

# Lakeview Tearooms

@ Colemans Cottage Fishery

Little Braxted Lane

Witham Essex

CM8 3EX

01376 516383

FREE AMPLE PARKING

LOVELY VIEWS



Thursdays to Sundays 09.00am – 2.30pm

## Traditional English Breakfast

9.00 – 11.00am

## Teas & Cakes by The Lakes

Come and enjoy an afternoon of cream teas with a choice of various teas or for that special occasion add a glass of Prosecco Bookings Only

## Lunchtime Menu

12.00 – 2.30pm

With Daily Specials Board

## Sunday Roasts

Bookings Only

## Licensed Bar

Buffet Service and Outside Catering offered

We also have at lunchtimes a Hot Meal Special Board with dishes that change daily from Liver & Bacon, Mashand Peas to Homemade Steak & Kidney or Chicken & Mushroom Pies to warming Homemade Soups and of course Fish Fridays, serving Beer Battered Haddock or Scampi, Chips and Peas For the over 55's, if you mention that you saw us in this magazine, you can choose any Hot Main Meal for £4.95 Tuesday to Friday.

## For Sale 6 String Guitar HONDO D18 6 String



**"DREADNOUGHT"**

**Made in the 1980's never  
played £80 O.N.O**

**Call P Hope**

**07904 235101**

Aerial Photography

Barns

Chimneys

Roof Tops

COST EFFECTIVE, SAFE ACCESS,  
ROOF TOP INSPECTIONS BY  
DRONE WITH NO NEED FOR  
SCAFFOLD, TEMPORARY WORK  
OR STRUCTURES REQUIRED.



NON DISRUPTIVE, FAST AND  
PROFESSIONAL SERVICE, SAME  
DAY REPORTS AND  
RECOMMENDATIONS FOR  
REPAIRS

FULLY CAA AND CIOB  
REGISTERED, QUALIFIED AND  
INSURED SERVICE. CARRIED OUT  
BY EXPERIENCED SURVEYORS.

Call to discuss your requirements;  
Chris; 07817219133  
Jim; 07966403783  
email; highsightse@gmail.com

Historic Buildings Monitoring

Building Inspections

Estate Records

# ANGLIA TREE SERVICES

Specialist tree surgery

Residential & Commercial Customers

CROWN REDUCTION • FELLING • TOPPING

HEDGE TRIMMING • ALL GARDEN WORK

STUMP GRINDING

For a quick, tidy and friendly service call:

Tel: 01621 892831



7 DAYS A WEEK • EMERGENCY SERVICE AVAILABLE • FULLY INSURED



**Philip Little**

Property Maintenance Magician

Local service at local prices

Knowledgeable and friendly

**07973 129808 or 01376 515257**





## Highlights of the Burns Supper: Dancing and Scottish Cabaret





Antony our organist took this picture of St Andrews Church on a visit to Alfriston near Eastbourne



A Picture of the Moon to accompany Sky Watchers article



I was rather taken with this boat at Maldon it is in very poor condition but has a certain old world charm like a biblical fishing boat





I Was extremely impressed on Sunday with this arrangement in the church. Many thanks to Tracy Scott for the arrangement.

Beautiful snowdrops today at Burton Agnes Hall



And finally these snow drops sent by a friend in Yorkshire just have to be shared

Serving the Local Community for over 125 Years

# G. COLLINS & SONS

Funeral Directors Ltd



30 RAYNE ROAD, BRAINTREE, CM7 2QH

01376 342266

4 THE STREET, WHITE NOTLEY, CM8 1RH

01376 583750

WWW.GCSFD.CO.UK

## Beautiful Rooms For Rent In Witham & Braintree

We have 4 Lovely houses  
2 in Witham—2 in Braintree  
With and Without en-suites  
£90—£130 per Week

(All inclusive of Rates, Light, Heat, and with Broadband)

See our Website:- [www.jbwpartners.co.uk](http://www.jbwpartners.co.uk)

Or Call

John  
07850 161629

Mavis  
07714 579783

Michelle  
07966 323914

**HELP WITH  
FUNERAL ARRANGEMENTS  
*RICHARDS*  
FUNERAL SERVICE**



**01376 513114**

78 Newland Street, Witham, CM8 1AH

From advice on how to register a death to making all the arrangements, we're here 24 hours a day.

Members of the National Association of Funeral Directors  
A British Owned Company [www.dignityfuneral.co.uk](http://www.dignityfuneral.co.uk)

***SpeedyBroadband.co.uk***  
***Sick Computers my  
Speciality***

- Home Networking Problems Sorted Out
- Computer Viruses Removed
- Operating System Upgrades
- Upgrade to Windows 10

FOR YOUR FREE SURVEY AND  
QUOTATION CONTACT

Peter Hope

[Peter.hope@speedybroadband.co.uk](mailto:Peter.hope@speedybroadband.co.uk)

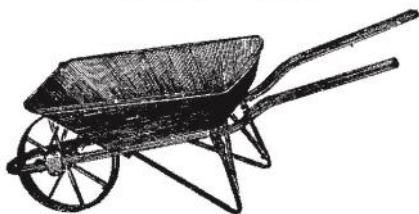
Tel: 01376 502605

Mob: 07904 235101

Website

[www.speedybroadband.co.uk](http://www.speedybroadband.co.uk)

**Ya Garden  
Cares**



**Thorough Attention on  
Bed Maintenance,  
Mowing & Clearance**

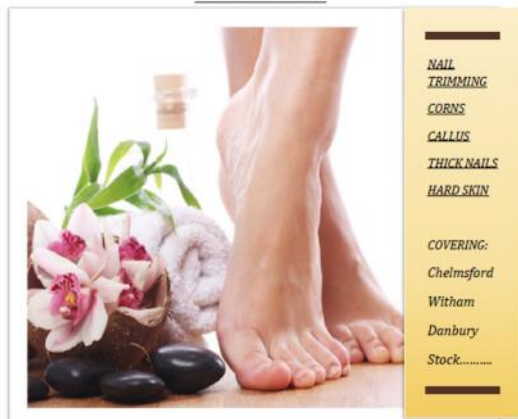
**Telephone  
Barry: 07732337626**

## FOOT HEALTH PRACTITIONER



THE SMAE INSTITUTE

### HOME VISITS



NAIL  
TRIMMING

CORNS

CALLUS

THICK NAILS

HARD SKIN

COVERING:

Chelmsford

Witham

Danbury

Stock.....

**JAMES NEWMAN (MCFHP,MAFHP)**

**TELEPHONE: 01376 519036**

**MOBILE: 07793971351**



**CARING FOR THE PETS OF WITHAM AND  
THE SURROUNDING AREA FOR 25 YEARS**

**SPECIAL O.A.P. SURGERY THURSDAYS**

**CAT ONLY CLINIC WEDNESDAYS**

**Late night surgery Wednesday till 8pm**

**Surgery Opening hours  
Monday to Saturday for appointments**

**Tel: 01376 500038**

**www.brookendvets.co.uk**



**PC Doctor**  
*Operations Limited*

**For all your computer  
requirements including:**

Virus prevention, detection & removal  
Broadband, Networking, Wireless & Firewall set up  
Email & SPAM filtering  
Hardware Repairs & Upgrades  
Software Faults & Crashes  
Backup Solutions & Data Recovery  
Software Installation & Removal  
Hardware & Software Supplied  
Website Management • Computer Training

**Health  
Checks  
£39.99**

**Office: 01621 891064 • Mobile: 07990 565336**

**Email: support@pcdocops.co.uk**

**Website: www.pcdocops.co.uk**

Monthly subscription service available to provide complete "peace of mind" and allow you to spread the cost of your IT requirements.

Please contact for further information.

## **REYNOLDS CARPENTRY SERVICES**

**For all Carpentry, Joinery  
& Cabinet Making Requirements**

**CSCS Registered**

**30 Years Experience**

**4 Years Apprenticeship**

**City & Guilds and**

**Advanced City & Guilds Qualified**

**Free estimates – No obligation**

**All building work considered**

**Can also make items to order**

**also**

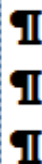
**'curtain poles, tiling, flat packs,  
kitchens, doors, sheds etc, no jobs  
too small'**

**Contact**

**07889 110962**

**Answer phone at other times**

# Jeremy Larke Television services



**Telephone: 01376 513645**

**Mobile: 07947 601619**

**Email: telerepair@aol.com**

**All Television Systems Caters  
for Freesat, Freeview, Sky**

- Installations & Repairs To all makes and models
- Full Plasma & LCD Fitting Service
- Wall Mount Brackets Supplied and Fitted
- Aerial & Satellite Dishes Fitted
- Freeview, Freesat & European Channels
- View and Control Your Sky in Other Rooms
- Aerial and Telephone Extension Points Installed



**Don't Delay Call Today**

## Janet C Davies

Dip. F.D. M.B.I.F.D

**BRAINTREE & KELEVEDON'S LADY FUNERAL  
DIRECTOR**

*Offering a full and Comprehensive Funeral Service*

**Telephone 01376 339300**

*For a Personal and Caring 24 hour service*

Local Chapel of Rest at Fern House 72 Coggeshall Road Braintree and  
Victoria House, Trews Gardens, Kelvedon

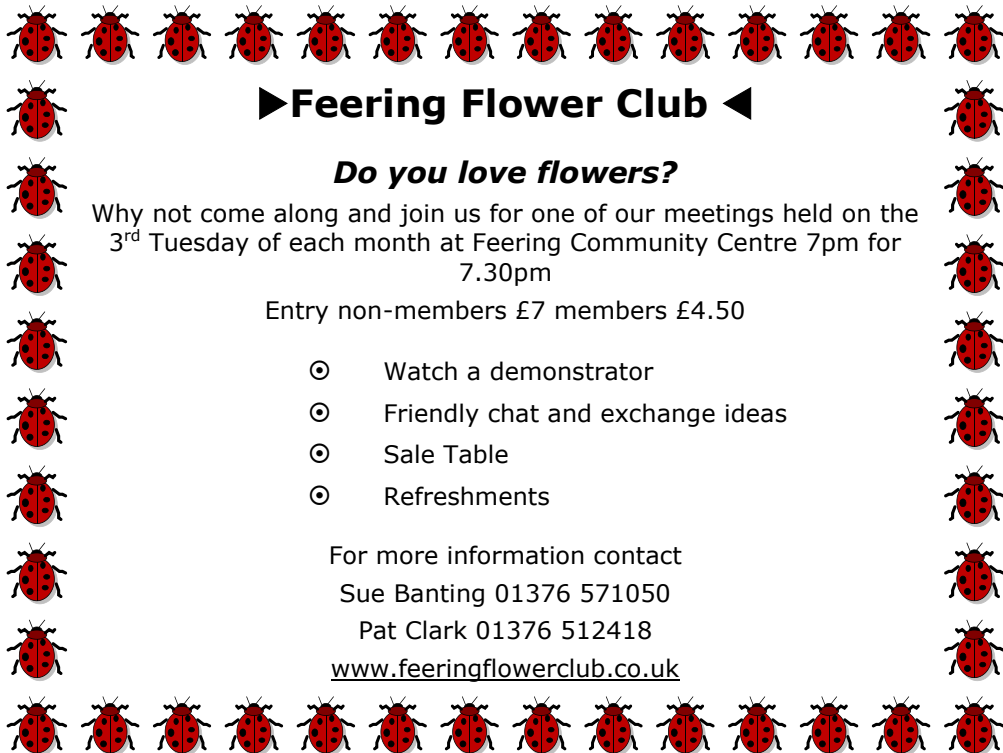
Funerals are arranged and carried out in the Traditional Manner but  
With 'The Gentle Touch'

Pre payment Plans available—Floral Tributes arranges—Woodland Burials  
Bereavement Care—Low Cost Simplicity Funerals - Memorials—Printing  
Catering—DWP Funerals

Part of the Hunnaball Family Group

Members of the National Association of Funeral Directors





## ►Feering Flower Club ◀

### *Do you love flowers?*

Why not come along and join us for one of our meetings held on the 3<sup>rd</sup> Tuesday of each month at Feering Community Centre 7pm for 7.30pm

Entry non-members £7 members £4.50

- ⊙ Watch a demonstrator
- ⊙ Friendly chat and exchange ideas
- ⊙ Sale Table
- ⊙ Refreshments

For more information contact

Sue Banting 01376 571050

Pat Clark 01376 512418

[www.feeringflowerclub.co.uk](http://www.feeringflowerclub.co.uk)

## DANIEL ROBINSON & SONS

Incorporating  
W C BROWN & SONS

**Independent Family Funeral Directors & Monumental Masons**

*A professional, caring, 24 hour service*

Private Chapel of Rest

Fleet of air conditioned limousines

Horse drawn funerals available

Traditional and contemporary funeral services to suit your wishes

Funeral pre-payment plans

Arrangements may be made in the comfort of your own home, if preferred

**Haslers Lane**  
**Great Dunmow**  
Tel: (01371) 874518

**7 Manor Street**  
**Braintree**  
Tel: (01376) 320582

**31 High Street**  
**Halstead**  
Tel: (01787) 475533

[www.drobinson.co.uk](http://www.drobinson.co.uk)

## **Turning the pages of History**

### **Research by Tracy Scott**

While we await a new Vicar for Rivenhall and Silver End churches, I have been looking back at one of the Rectors letters from March 1966. At this time it was Rev. David King who was in this parish from 1960 up until he became Rector of Little Baddow church February 1966.

My Dear Friends,

There are two parts of this letter. The one dealing with the past: the other concerned with the future.

We have to thank you all most sincerely for your very generous gift to us. The £61 will be used to buy a new television set, as ours is beginning to fade!! The bouquet, too, to my wife, was much appreciated by her (most people know her love of flowers) and it was sweetly presented by Hazel Lapwood.

You have all been most kind and I shall treasure the list of names of those who contributed.

One must write a word also of thanks to Congregationalist of Silver End, who gave me a book. It was complete surprise to me and a most kind thought on their part.

The gifts of pipe, pouch and tobacco from the devotees of the church whist drives was also a great surprise and when Albert Scott told me of their intention I was completely taken aback.

Thank you, so much, all of you.

It has already been announced that the Reverend David Nash has been appointed to fill my place. He is just the man for Rivenhall and I shall be very surprised if he does not do well. He is a young man with drive and, I am sure, will do all the things I ought to have done and, with his more modern approach, will be the more acceptable.

There is just this that I must write, and I promised him to do so. It will be quickly noticed that he has no wife with him, but two sons. In his own words "she left us some years ago". Having written that, and you all knowing it, there will be no need for idle questions or for gossip. It is a fact which may as well be face at the commencement of his ministry and there will not have to be embarrassing explanations afterwards.

Thus I prepare the way for my successor because I am the senior

man and we are both "King's" men.

Those were the two things I wanted to write about. What better than to end with the words of St. Paul: "brethren, I command you to God",

Yours sincerely, A. David King.



## **At last Back to the Future: the 2022 Burns Supper**

On the evening of Saturday last, our community was finally able to hold a Rivenhall & Silver End Burns Supper - after two dreary, dormant years.

For over 30 years this Burns Supper has raised many, many thousands of pounds to support our wonderful church parish of Rivenhall and Silver End. Over £800 of precious church funding was raised by the event. Plus £163 from the Raffle.

Much has recently changed: our excellent caterer of many years standing had retired; so too had our musical support group: but we bash on!

Jackie Allan who has been involved in running this Burns Night since its inception felt the time was right to start-up once more ~ and how right she was! Some who had been in lockdown were understandably reticent about once again mixing with their friends - but they came and we all had a wonderful time.

Would anyone turn-up? ... Over sixty as it turned out.

Would any youngsters be present? ... Many of all ages.

Would the event be profitable? Certainly ... "Oh ye of little faith!"

Did we all enjoy ourselves? ... Definitely!

At 7:15 pm following a welcome from Master of Ceremonies John Macrae, our local team rector Rev Dr Jonathan Pritchard (who came with his whole family) delivered the Selkirk Grace. The haggis was then presented by Rivenhall Playing Field Association Chairman Mick Marshall and brilliantly piped-in by Tom Broderick.

Tom's reward of "a dram" from Phil Little was graciously accepted then Dr Alex Allan (Jackie's son) addressed the haggis in his unique, entertaining style (followed by much well deserved applause). Thereafter everyone settled down to their supper of haggis tatties and neeps to a backdrop of

Highland tunes supplied by Sue Last.

Jackie Allan then delivered the Immortal Memory (a tribute to Robert Burns), John Macrae delivered a Toast to the Lassies, and Sue Last then organised the Highland dancing, (a truly excellent caller she is).

We then stopped for a musical interlude of Scottish songs which were sung on stage by Peter Hope on guitar, supported by Jackie Allan on the recorder: so many people joined in - that was truly wonderful. Following this we held the Burns Supper raffle, organised by Wilson Kerr and Carole McCarthy.

Two Highland musical interludes followed; firstly a trio of pipers played from the stage, and later six pipers and drummers of the Essex Caledonian Band playing a series of raucously received sets on the dance floor.

It was then back to Sue Last for our final series of Highland dances, before we closed to a much enjoyed Auld Lang Syne.

But behind all well organised, entertaining events is a small army of volunteers. Probably foremost was Ann Kerr who sorted all the ticketing, the seating arrangements, and helped to serve the fare: thank you so much to all of you. Other volunteers decorated the hall, dressed all the tables, served all the fare, and cleared-away afterwards - what a wonderful community we are.

Let us now look forward with great anticipation to an even bigger and better Burn Supper in a very much brighter 2023.

\*\*\*\*\*

## **Burns Might Supper 2022 raffle**

**THANK YOU to all of you who donated raffle prizes. They were greatly appreciated and the raffle raised £163**

And Many Thanks to Carol for organising. One of our  
unsung hero's

## **Security Assured?**

Nothing is burglar or crime proof, if someone is that determined to break in or steal, they will do so despite the security in place. But there is no reason to get paranoid about security, it is all about having the right risk commensurate measures in place i.e., security measures appropriate to the crime risk. You live in an average house with average contents then there is not the need to have the same level of security as that is needed for a mansion, naturally the mansion or property with high value contents will need a higher level of security. For instance, you would be fool to protect a £12,000 cycle with just a lock costing just a few pounds, the security measures of anything must be relative to the value of the item and the risk. It's all about making your property less attractive to the thief, is it too difficult to steal, is the thief more likely to be arrested, is the desirability/value of the property not obvious or is the property identifiable, these are just a few of the considerations a thief may have in choosing a target. You will need to consider the requirements of your insurance company for whatever you intend covering, if it is an expensive item or of heritage value it is wise to have discussions with your insurer or insurance agent to ensure that you have correct level of cover in place and understand any additional protection that they may require.

Now you may remember that Aviva Insurance advert containing the interrogation and the words "...does your door lock conform to British Standard 3621..." reply "I don't know, nobody knows" <https://www.youtube.com/watch?v=2PTtGHftGM> . This relates to product certification such as LPS1175 general security, and PAS24 window and door-sets which are a measure that it has passed independent security testing. Another and easier way to find a tested security product is to look for the logos or webpages of Secured by Design [www.securedbydesign.com](http://www.securedbydesign.com) or Sold Secure [www.soldsecure.com](http://www.soldsecure.com) accredited products which as part of the accreditation process have to have the relevant certification.

Personal recommendation of a family member, friend or colleague when choosing a trader provides some assurance or with services and traders Essex Trading Standards have a totally independent accreditation scheme called 'Buy with Confidence' <https://www.buywithconfidence.gov.uk/find-a-business/> . There are also a number of trade bodies such as for: Locksmiths – The Master Locksmith Association <https://www.locksmiths.co.uk/> and intruder alarms and CCTV - NSI [www.nsi.org.uk](http://www.nsi.org.uk) or SSAIB <https://ssaib.org/> their membership providing some confidence in products and services .

For further crime prevention advice see: <https://www.essex.police.uk/cp/crime-prevention/> or <https://www.securedbydesign.com/guidance/crime-prevention-advice> .

\*\*\*\*\*

## **RIVENHALL GARDENING CLUB**

Club members met on Tuesday 8th February 2022, in Rivenhall village hall. Chairman Mrs. Tracy Scott welcomed everyone to the first meeting of the year and after a few short notices introduced our speaker. Jackie Allen. Jackie has regaled us with her interesting adventures in far flung places on two previous occasions and for this talk she was 'Exploring Georgia'. Bordered by Russia, Turkey, Armenia and Azerbaijan, Georgia boasts a very ancient and at times very turbulent history, from C6 BC through to 1991 when it gained independence ( although ever aware of its influential neighbour Russia ).

Georgia is approximately 27,000 sq.mls with probably a quarter of the population living in the capital Tbilisi, a mix of modern and ancient buildings with some very ancient churches containing many wall paintings. On to Kakheti and the wine region with heritage grapes making a very rich red wine. Nearby Gremi, capital of the Kakheti province in the C16 and C17 served as a trading town on the Silk Road. In this area is the silk road cave town of

Uplistsikhe where an entire town has been carved into the mountainside. Dating from the first Millennium BC it grew to be an important city on the trade route linking Byzantium with India and China. Even more dramatic than Uplistsikhe is the cave town of Vardzia. Cut into the towering cliff and in a remote but beautiful landscape it once numbered 3,000 caves with up to 19 tiers in places, churches, refectories and meeting halls. Regrettably much was destroyed in the earthquake of 1456, however, there is enough remaining to imagine how spectacular it must have looked. Georgia's most famous son was Joseph Stalin and his birthplace of Gori was visited. Initially he began training as a priest before he abandoned that to join the new Bolshevik movement. There is a museum dedicated to him and you can view his personal railway carriage. More walks and stunning views of the Caucasus Mountains ( albeit a little damp! ) brought the holiday to a close. Thank you Jackie, an informative and enjoyable evening.

## **COMPETITION RESULTS**

Horticultural

1<sup>st</sup> Maurice Bacon ( one entry )

Flower of the Month

1<sup>st</sup> Maurice Bacon    2<sup>nd</sup> Karen Dakin    3<sup>rd</sup> Sue North

Photograph of the Month

1<sup>st</sup> Karen Dakin    2<sup>nd</sup> Jenny Claydon    3<sup>rd</sup> Sue North

Domestic

1<sup>st</sup> Karen Dakin    2<sup>nd</sup> Jenny Claydon    (two entries)

The Club's next meeting will be on **Tuesday 8<sup>th</sup> March 7.30pm** in Rivenhall village hall. Competitions will be:  
Horticultural — a succulent pot plant. Domestic — 3 fruit scones.  
Flower of the Month. Photograph of the Month.

Our speaker will be Sarah Connelly who will be accompanied by her dog Ambrose. Sarah will talk to us



about 'Puppy rearing for Guide Dogs' Entrance is £2 to include refreshment. You are reminded that annual memberships are due - £5 Adult. £1 Junior. New members and visitors are always welcome. For further information contact the Club Secretary on 01376 — 512781.

\*\*\*\*\*

### **Fluffy Fluffy pancakes**

- 300g self-raising flour
- 1 tsp baking powder
- 1 tbsp caster sugar
- 2 medium eggs
- 1 tbsp maple syrup, plus extra to serve
- 300ml milk

Weigh out and tip the flour, baking powder and sugar into a large bowl with a small pinch of salt.

Crack in the eggs and whisk until smooth. Add the maple syrup and milk while whisking.



Put a knob of butter and a dash of oil in a non stick frying pan. Use the size of pan that you like the size of you pancakes, I like to make small ones. Add the pancake mix using a tablespoon, I use two spoonfuls. Cook until bubbles start to form on the surface, then flip over and cook the other side. Eat straight away, or keep warm in a low oven. Remember that you can have them with bacon, or stir fried vegetables as well as maple syrup and ice-cream!

## Organisations in Rivenhall

Clerk to Parish Council	Keith Taylor	516975
Email parishclerk@rivenhallparishcouncil.net	meets every first Tuesday	
End to End Nature Care	Simon Taylor	01621 810141
Gardening Club	Carole McCarthy	512781
Meets on 2nd Tuesday at 7.30pm in Village Hall		
Carpet Bowls	Mick Marshall	512836
Meets every Thursday at 7.30pm in Village Hall		
Playing Fields Association	Mick Marshall	01376 512836
Spread Your Wings Dance Acam	Laura Pearson	01376 741317

## Facilities

Hire of Village Hall	email rivenhallvillagehall@gmail.com
Hire of Henry Dixon Hall	Tracy Scott 571551
Oak Store Rivenhall "Open All Hour" Tel AJ	01376 538838

## Organisations in Silver End

Clerk to Parish Council	Mrs B. M. Temple	618464
Email parishclerk@silverendparishcouncil.gov.uk		
Bowls Club	Paul Mann	07551 006906
Children's Centre	Faye Savage	587960
Neighbourhood Police	Braintree Policing Dial 101	
Congregational Church	Sharon Gray	583913
Friendship Club	Maureen Green	585275
Silver End Gad Abouts	Denise Sullens Smith	07952 992782
Gardening Club	Liz Woor	585586
Guiding Group	Carol Hutchings	07857 663959
Neighbourhood Watch	Judy Hill	07896 975839
Scouting Group	Elaine Hall on +44	7885 489788
St Mary's Church (R.C.)	Vivian Phillips	583598
Tennis Club	Jason Cairns	584581
Workers Educational Assoc.	Brian Gillion	583706
Luncheon Club	Helen Thomson	583255
Doctors Surgery		583387
Silver End Heritage Society	Jackie Nesbitt	07707 084608
Silver End United Football Club	Mark Edgell	584639 Web
Site www.silverendunitedfc.co.uk		
Women's Institute	Brenda Warnes	07931 548193
Community Warden	Jackie Windard	07785 515526
Post Office in Co-op - please note that it closes at Lunchtime 1-2pm		
Closes 1 pm Wednesday and 12.30 pm Saturday		
Library: Tues & Thurs - 2pm to 6pm Saturday 9am to 1pm		

HUNNABALL

Family Funeral Services



Here **whenever** you need us

Funerals | Memorials | Pre-paid Funeral Plans

**Hunnaball of Witham**

1 Coach House Way, Newland Street, Witham CM8 1YJ

**01376 511592**

[www.hunnaball.co.uk](http://www.hunnaball.co.uk)

**JANET C DAVIES**

Lady Funeral Directors



**Our Ladies  
in Hats**

*"funerals with  
a gentle touch"*

Funerals | Memorials  
Pre-paid Funeral Plans

**Janet C Davies of Kelvedon**

233 High Street, Kelvedon CO5 9JD

**01376 573691**

[www.hunnaball.co.uk](http://www.hunnaball.co.uk)

# DRH LANDSCAPES

Est. 1987

Quality Comes 1<sup>st</sup>

**Garden Landscape and Design – Hard Landscaping – Soft Landscaping  
Grounds Maintenance for Private and Commercial Premises**

- Are you planning to redesign and landscape your garden?
- Does your garden just need a little TLC or a complete makeover?
- Are you looking for assistance with regular garden maintenance or perhaps a one-off visit to get things back in order?
- Is your lawn looking tired? Would you like a new replacement lawn or artificial lawn instead?

We are a family run business with over 30 years of experience working in the ever changing world of landscape management, business regulations and horticulture, with full public and employer liability insurance, as well as being a fully registered waste carrier with the Environmental Agency.



OFFICE: 01376 514142

We welcome...



EMAIL: [info@drhlandscapes.com](mailto:info@drhlandscapes.com)

[www.drhlandscapes.com](http://www.drhlandscapes.com)

Harcog Centre, 77-83 Maldon Road, Witham, Essex CM8 1HP

